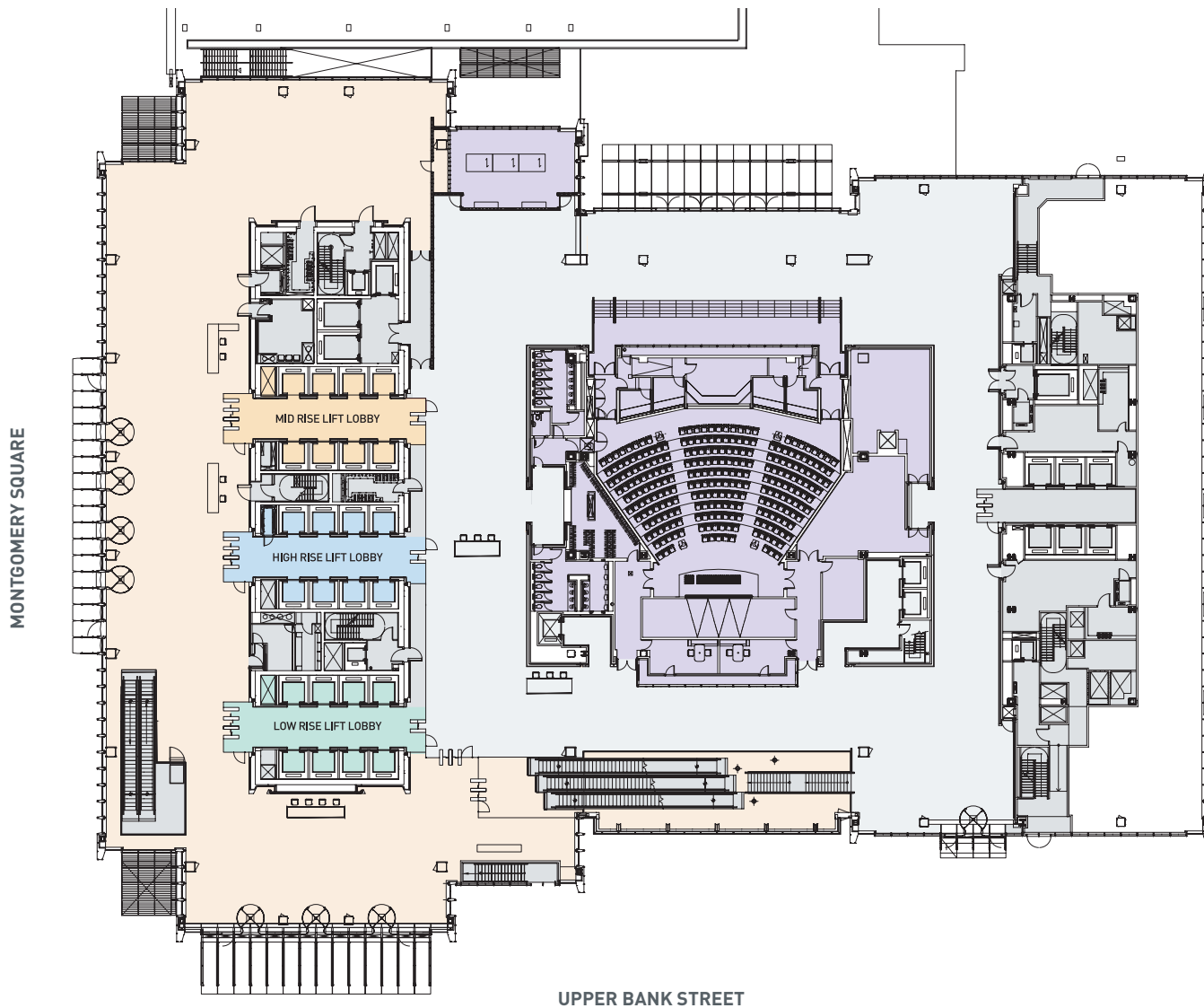
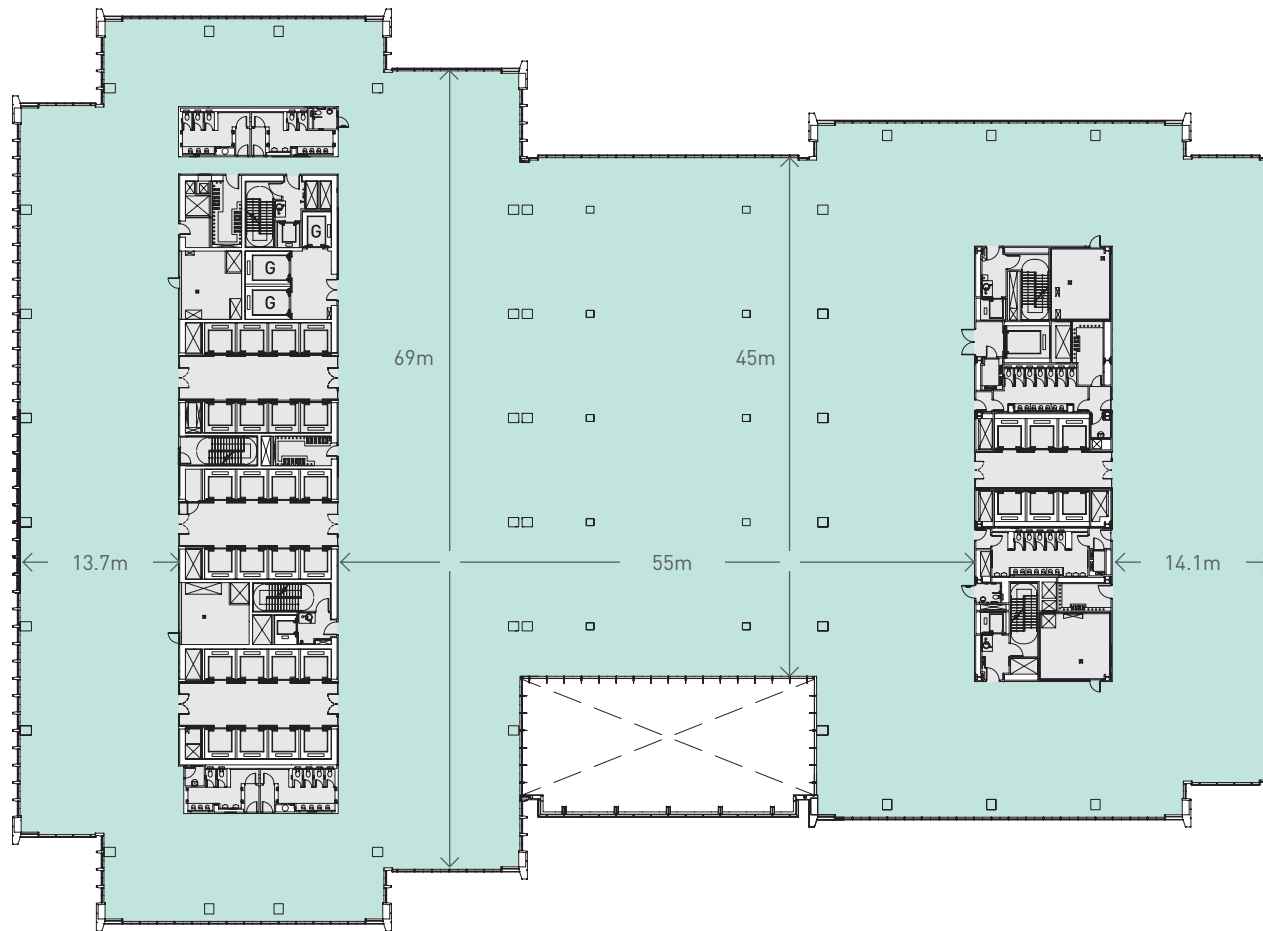


GROUND FLOORPLAN



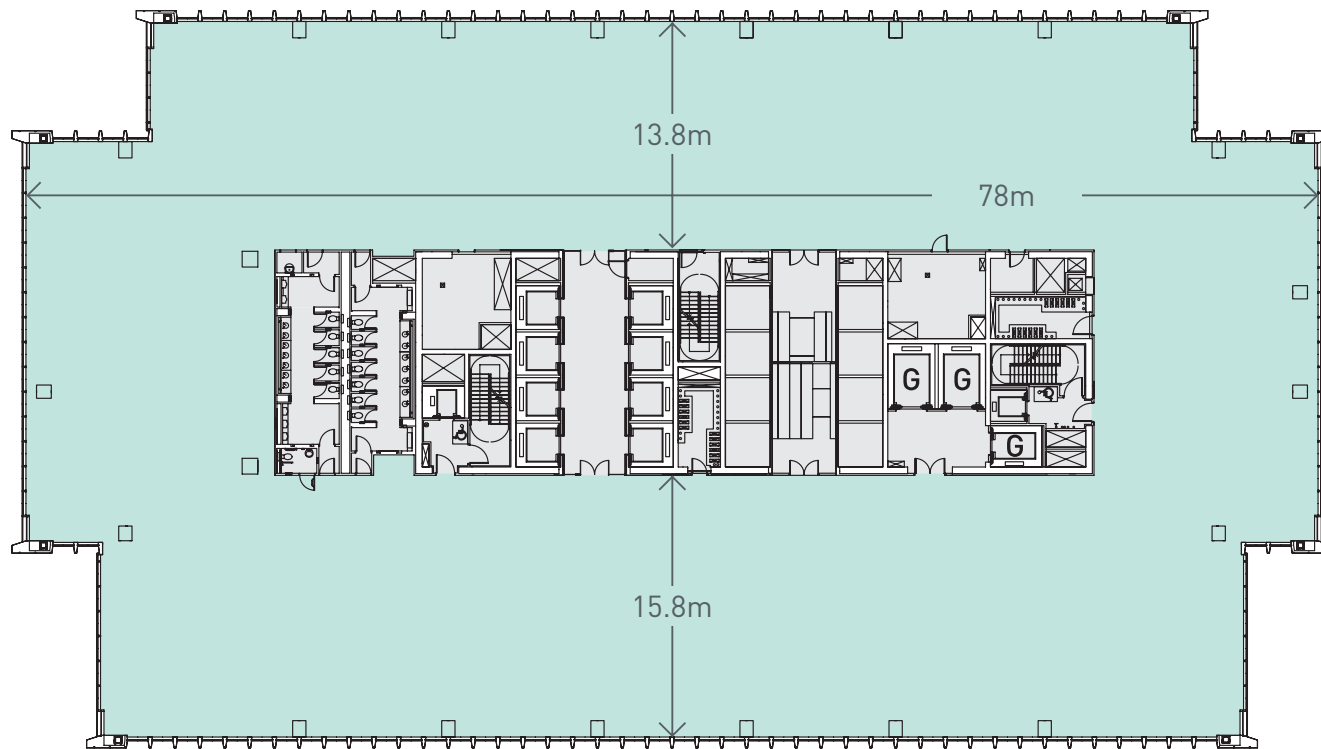
PODIUM FLOORPLAN

57,108 SQ FT (5,305.5 SQ M)



TYPICAL MID RISE TOWER FLOORPLAN

27,008 SQ FT (2,509.1 SQ M)



TYPICAL LOWER HIGH RISE TOWER FLOORPLAN

27,083 SQ FT (2,516.1 SQ M)

